



SONORAN

FAUX WOOD BLIND
COLLECTION

January 2023 | Product Reference & Price Guide

Prices subject to change without notice.

v1.23

TABLE OF CONTENTS

Product Overview

• Color Charts	3
--------------------------	---

Pricing Information

• 2" & 2-1/2" Faux - Whites & Neutrals Price Chart and Surcharges	4-5
• 2" Faux Premium Grains I Price Chart and Surcharges	6
• 2" Faux - Premium Grains II Price Chart and Surcharges	7
• Somfy Automation System and Option Surcharges	8

Valance Information

• Individual Valance ordering and Color Chart	9
• Valances and Valance Return Information and Specifications	10

Solid and Decorative Tape Option and Listing	11
---	-----------

Product and Specifications

• Product Specifications	12
• Size Specifications, Finished Dimensions and Mounting Requirements	13

Controls, Components, Ladder/Tape Placement & Stack-up Charts

• Standard Cord Lift	14
• Cordless	15
• Somfy Automation	16
• Cordless Lift & Lock™	17

Oversize Common Carrier Delivery

All orders with any quantity of shades or blinds or any continuous valance 90" or more in width are considered oversize. Therefore, a net shipping charge per oversized unit will be assessed.

Oversized orders that require expedited shipping will be quoted and charged accordingly.

Please see Terms of Sale & Freight / Repair Charges for additional freight and shipping charge information.

TERMS OF SALE & FREIGHT / REPAIR CHARGES

PRICE QUOTATION

All Faux Wood Collection products are priced FOB San Diego, CA and do not include freight.

All prices subject to change without notice.

To ensure order accuracy, please use the Faux Wood Collection order form. The blank order form can be found at the back of the price book. Make copies to create additional blank order forms.

CANCELLATION OR CHANGE ORDER

IMPORTANT! Due to the custom nature of our products, we cannot accept changes or cancellations after orders have been put into production.

LEAD TIME

Typically, orders (less than 15 units) are manufactured and shipped within 5 business days. All orders are subject to inventory availability. Orders placed after 3:30 p.m. EST are considered as next day business.

ORDER TRACKING & ORDER STATUS

Order confirmations are sent via email within 24 hours of placing order. Please make sure you have your email on file with BDD Inc. To track your order or check the status of your order, please contact customer service and provide them with the work order number.

STANDARD SHIPPING & HANDLING, DELIVERY & FREIGHT POLICIES

\$8.00 for each blind

Oversize (90" and above) \$50 each blind, \$80 Minimum

Next Day, 2nd Day Air and 3 Day select shipping options are available - actual freight will be applied.

FREIGHT DAMAGE & SHORTAGES

Please inspect all shipments immediately and carefully. Please report damages and shortages on the delivery receipt and notify BDD Inc. customer service within 48 hours. No freight damage claim will be accepted after 30 days from shipping.

COLOR CHART

2" SMOOTH

WHITES & NEUTRALS	COLOR #
SNOW WHITE	401
PEARL	403
EGGSHELL	404
ALABASTER	452
PEBBLE	428
GRANITE	426
CLOUD	451
EMBOSSSED SNOW WHITE	E501
EMBOSSSED PEARL	E503

2" PRINTED (Premium Grain I)

WHITES & NEUTRALS	COLOR #
SEASPRAY	75
ASHWOOD	76
DRIFTWOOD	77
FROSTED OAK	73
GRAYSTONE	74
GRAY WASH	78

2" WOODGRAIN (Premium Grain II)

WHITES & NEUTRALS	COLOR #
HONEY	PG700
TEAK	PG701
TOBACCO	PG702
CEDAR	PG704
KONA	PG705

2 1/2" SMOOTH

WHITES & NEUTRALS	COLOR #
SNOW WHITE	901
PEARL	903
EGGSHELL	904
ALABASTER	952
PEBBLE	928
GRANITE	926
CLOUD	951

CHARACTERISTICS OF FAUX WOOD BLINDS

Faux wood blinds are an excellent and economical alternative to wood blinds for many applications and offer a long lasting performance. The Whites & Neutrals and Premium Grain I colors are constructed of a durable engineered polymer material. Our Premium Grain II features darker colors Teak, Tobacco, and Kona which are constructed from acrylic styrene acrylonitrile (ASA). Colors Honey and Cedar are constructed from a durable engineered polymer material.

Faux wood blinds are not intended for installation near heat sources such as radiators and heat registers which can potentially compromise the integrity of the faux wood material, or in locations where temperatures within the window casing will exceed 120 degrees Fahrenheit, including older single pane or aluminum frame windows that conduct and amplify outside heat into the window casing.

White and Neutrals and Premium Grain I collections are certified gold for Greenguard Indoor Air Quality. Whites and Neutral colors and the Premium Grain 1 collection are FR Certified NFPA 701. Premium Grain II colors are not FR certified.

// Faux Wood Blinds – 2" SMOOTH

2" SMOOTH - 3" Standard Decorative Polymer Valance Included in Price

Note: Blinds over 50 sq. ft. require 2 on 1 Headrail. Refer to chart below for all min/max size specifications

Height to:	Width:	24"	30"	36"	42"	48"	54"	60"	66"	72"	78"	84"	90"	96"
	30"	130	140	151	165	177	208	218	231	243	274	290	298	309
36"	135	146	158	173	187	218	231	244	258	290	307	317	328	
42"	139	151	163	180	215	227	239	255	269	302	319	331	343	
48"	144	156	172	189	225	239	251	267	284	317	336	348	362	
54"	147	161	177	217	234	248	262	277	316	329	348	362	378	
61"	153	168	184	225	243	258	274	291	329	345	366	381	397	
66"	156	172	210	231	251	267	283	302	342	357	380	395	411	
73"	161	179	218	239	260	277	295	314	355	373	397	414	430	
78"	165	184	224	246	269	286	303	345	368	385	409	428	446	
84"	170	210	231	255	277	296	316	359	381	400	426	446	465	
90"	194	215	236	262	286	305	326	369	394	413	440	459	480	
96"	199	220	241	269	293	314	335	380	404	425	452	473	494	
102"	205	225	250	277	303	326	368	392	420	440	470	492	513	
108"	208	231	255	283	310	333	378	402	430	452	482	506	529	

Available Colors:

Snow White, Pearl, Eggshell, Alabaster, Pebble, Granite, Cloud, Embossed Snow White, Embossed Pearl

CLOTH TAPE SURCHARGE

Note: See Tape section for sizes & availability. Tapes are NOT available with Lights Out feature, Cordless or Cordless Lift & Lock™.

Width:	24"	28"	32"	36"	42"	48"	54"	60"	66"	72"	78"	84"	90"	96"	102"
Solid	\$58	\$64	\$64	\$64	\$71	\$72	\$79	\$80	\$87	\$87	\$93	\$93	\$100	\$101	\$114
Decorative	\$79	\$95	\$96	\$96	\$113	\$113	\$130	\$131	\$149	\$149	\$166	\$166	\$177	\$184	\$201

INDIVIDUAL VALANCE

Width:	24"	28"	32"	36"	42"	48"	54"	60"	66"	72"	78"	84"	90"	96"
3" Std Deco & Crescent														
3" and 4.5" modern	\$44	\$46	\$50	\$53	\$56	\$61	\$70	\$74	\$79	\$84	\$89	\$96	\$101	\$105

NO CHARGE OPTIONS

- | | |
|---|---|
| 3" Modern Valance | Spacer Blocks (3/8" & 3/4") |
| 3" Crescent Valance) | Cord or Wand Tilt |
| Lights out Routless Feature (cordlock only) | Optional Wand & Cord Lengths |
| Controls (grouped or split) | 2 on 1 Headrail - price each blind separately |
| Hold Down Brackets | Side by Side* |
| Tile Cut Out* (not available with cordless lift & lock) | |
| * Not available in the Lights Out feature | * Guaranteed within 1/4" when requested at time of order. |

EXTRA CHARGE OPTIONS

- | | | | |
|--|---------------|---|---------------|
| Cordless Lift & Lock™ System* | Add \$86 each | Blinds Under 12" Wide | Add \$19 each |
| Cordless Lift System* | Add \$99 each | Tape Valance (on 3" Standard Deco Valance only) | Add \$13 each |
| Keystone Valance Option (for blinds under 102" wide) | Add \$13 each | | |
- * Not available in the Lights Out feature

Please see Terms of Sale & Freight / Repair Charges for additional freight and shipping charge information.

Specifications	Standard	Cordless Lift	Cordless Lift & Lock™	Somfy Automation w/ Standard Lift*	Somfy Automation w/ Cordless Lift*
2" & 2-1/2" Blinds					
Minimum Width (tilt only centered)	8"	n/a	n/a	n/a	n/a
Minimum Width (net)	8"	18"	10-1/2"	20"	20"
Maximum Width (one blind)	96"	78"	96"	96"	78"
Minimum Height (solid or decorative tape)	12"	n/a	n/a	12"	n/a
Minimum Height	12"	12"	12"	12"	12"
Maximum Height	108"	72"	84"	96"	72"
Maximum Width 2 on 1 Headrail	120"	n/a	120"	n/a	n/a
Maximum Continuous Valance Width (not spliced)	102"				
2" Blinds - Max Area/Square Footage	50 sq/ft	40 sq/ft	40 sq/ft	50 sq/ft	40 sq/ft
2-1/2" Blinds - Max Area/Square Footage	50 sq/ft	36 sq/ft	31 sq/ft	50 sq/ft	36 sq/ft

Blinds over max sq/ft require 2 on 1 headrail (where available) *Automation is not available with Cordless Lift & Lock

// Faux Wood Blinds – 2-1/2" SMOOTH

2-1/2" SMOOTH - 3" Standard Decorative Polymer Valance Included in Price

Note: Blinds over 50 sq. ft. require 2 on 1 Headrail. Refer to chart below for all min/max size specifications

Height to:	Width:	24"	28"	32"	36"	42"	48"	54"	60"	66"	72"	78"	84"	96"
	30"	168	174	178	187	195	205	218	228	236	248	255	267	287
36"	172	177	183	193	201	213	225	237	246	258	266	279	301	
42"	175	181	187	196	205	219	231	245	254	266	275	290	311	
48"	178	184	192	202	213	227	240	254	263	276	287	302	325	
54"	183	190	198	210	221	234	249	263	273	288	299	316	340	
61"	187	195	202	214	227	242	257	272	284	299	311	328	355	
66"	190	199	207	221	233	249	264	281	293	310	322	340	369	
73"	196	204	213	228	240	258	275	292	305	322	335	355	384	
78"	198	207	216	231	245	263	279	298	311	329	343	363	394	
84"	202	211	221	237	251	270	288	307	322	340	355	376	n/a	
90"	205	216	227	242	257	276	296	316	331	350	366	388	n/a	
96"	210	221	231	248	263	284	304	325	341	361	378	n/a	n/a	
102"	213	224	236	252	269	292	311	334	350	372	n/a	n/a	n/a	
108"	218	228	240	258	276	299	320	343	359	n/a	n/a	n/a	n/a	

Available Colors:

Snow White, Pearl, Eggshell, Alabaster, Pebble, Granite, Cloud

CLOTH TAPE SURCHARGE

Note: See Tape section for sizes & availability. Tapes are NOT available with Lights Out feature, Cordless or Cordless Lift & Lock™.

Width:	24"	28"	32"	36"	42"	48"	54"	60"	66"	72"	78"	84"	90"	96"	102"
Solid	\$58	\$64	\$64	\$64	\$71	\$72	\$79	\$80	\$87	\$87	\$93	\$93	\$100	\$101	\$114
Decorative	\$79	\$95	\$96	\$96	\$113	\$113	\$130	\$131	\$149	\$149	\$166	\$166	\$177	\$184	\$201

INDIVIDUAL VALANCE

Width:	24"	28"	32"	36"	42"	48"	54"	60"	66"	72"	78"	84"	90"	96"
3" Std Deco & Crescent														
3" and 4.5" modern	\$44	\$46	\$50	\$53	\$56	\$61	\$70	\$74	\$79	\$84	\$89	\$96	\$101	\$105

NO CHARGE OPTIONS

3" Modern Valance
 3" Crescent Valance
 Lights out Routless Feature (cordlock only)
 Controls (grouped or split)
 Hold Down Brackets
 Tile Cut Out* (not available with cordless lift & lock)
 * Not available in the Lights Out feature

Spacer Blocks (3/8" & 3/4")
 Cord or Wand Tilt
 Optional Wand & Cord Lengths
 2 on 1 Headrail - price each blind separately
 Side by Side*
 * Guaranteed within 1/4" when requested at time of order.

EXTRA CHARGE OPTIONS

Cordless Lift & Lock™ System*	Add \$86 each	Blinds Under 12" Wide	Add \$19 each
Cordless Lift System*	Add \$99 each	Tape Valance (on 3" Standard Deco Valance only)	Add \$13 each
Keystone Valance Option (for blinds under 102" wide)	Add \$13 each		

* Not available in the Lights Out feature

Please see Terms of Sale & Freight / Repair Charges for additional freight and shipping charge information.

Specifications	Standard	Cordless Lift	Cordless Lift & Lock™	Somfy Automation w/ Standard Lift*	Somfy Automation w/ Cordless Lift*
2" & 2-1/2" Blinds					
Minimum Width (tilt only centered)	8"	n/a	n/a	n/a	n/a
Minimum Width (net)	8"	18"	10-1/2"	20"	20"
Maximum Width (one blind)	96"	78"	96"	96"	78"
Minimum Height (solid or decorative tape)	12"	n/a	n/a	12"	n/a
Minimum Height	12"	12"	12"	12"	12"
Maximum Height	108"	72"	84"	96"	72"
Maximum Width 2 on 1 Headrail	120"	n/a	120"	n/a	n/a
Maximum Continuous Valance Width (not spliced)	102"				
2" Blinds - Max Area/Square Footage	50 sq/ft	40 sq/ft	40 sq/ft	50 sq/ft	40 sq/ft
2-1/2" Blinds - Max Area/Square Footage	50 sq/ft	36 sq/ft	31 sq/ft	50 sq/ft	36 sq/ft

Blinds over max sq/ft require 2 on 1 headrail (where available) *Automation is not available with Cordless Lift & Lock

Effective 2/1/23

// Faux Wood Blinds – 2" PRINTED

2" PREMIUM GRAINS I - 3" Standard Decorative Polymer Valance Included in Price

Note: Blinds over 50 sq. ft. require 2 on 1 Headrail. Refer to chart below for all min/max size specifications

Height to:	Width:	24"	30"	36"	42"	48"	54"	60"	66"	72"	78"	84"	90"
	30"	154	168	181	199	216	252	265	283	298	335	355	367
36"	162	176	193	213	230	269	285	302	320	359	380	394	
42"	166	183	201	222	265	281	298	318	337	376	400	415	
48"	174	193	213	236	279	298	316	337	359	400	425	443	
54"	179	199	220	267	291	310	330	353	398	417	445	464	
61"	187	209	232	281	306	328	349	373	421	443	470	491	
66"	193	216	263	291	318	339	363	388	437	460	490	511	
73"	201	224	273	304	332	357	380	408	458	484	515	538	
78"	207	232	283	314	343	369	394	447	476	501	534	560	
84"	215	263	293	326	359	386	413	466	497	525	560	587	
90"	242	271	300	335	369	398	427	482	515	544	579	609	
96"	248	279	310	345	380	412	441	497	531	562	599	628	
102"	256	287	320	359	396	427	482	517	554	585	624	657	
108"	261	295	330	369	406	439	495	532	570	603	644	677	

Available Colors:

Seaspray, Ashwood, Driftwood, Frosted Oak, Graystone, Gray Wash

CLOTH TAPE SURCHARGE

Note: See Tape section for sizes & availability. Tapes are NOT available with Lights Out feature, Cordless or Cordless Lift & Lock™.

Width:	24"	28"	32"	36"	42"	48"	54"	60"	66"	72"	78"	84"	90"	96"	102"
Solid	\$58	\$64	\$64	\$64	\$71	\$72	\$79	\$80	\$87	\$87	\$93	\$93	\$100	\$101	\$114
Decorative	\$79	\$95	\$96	\$96	\$113	\$113	\$130	\$131	\$149	\$149	\$166	\$166	\$177	\$184	\$201

INDIVIDUAL VALANCE

Width:	24"	28"	32"	36"	42"	48"	54"	60"	66"	72"	78"	84"	90"	96"
3" Std Deco & Crescent														
3" and 4.5" modern	\$44	\$46	\$50	\$53	\$56	\$61	\$70	\$74	\$79	\$84	\$89	\$96	\$101	\$105

NO CHARGE OPTIONS

3" Modern Valance	Spacer Blocks (3/8" & 3/4")
3" Crescent Valance	Cord or Wand Tilt
Lights out Routless Feature (cordlock only)	Optional Wand & Cord Lengths
Controls (grouped or split)	2 on 1 Headrail - price each blind separately
Hold Down Brackets	Side by Side*
Tile Cut Out* (not available with cordless lift & lock)	
* Not available in the Lights Out feature	* Guaranteed within 1/4" when requested at time of order.

EXTRA CHARGE OPTIONS

Cordless Lift & Lock™ System*	Add \$86 each	Blinds Under 12" Wide	Add \$19 each
Cordless Lift System*	Add \$99 each		
Keystone Valance Option (for blinds under 102" wide)	Add \$13 each		

* Not available in the Lights Out feature

Please see Terms of Sale & Freight / Repair Charges for additional freight and shipping charge information.

Specifications	Standard	Cordless Lift	Cordless Lift & Lock™	Somfy Automation w/ Standard Lift*	Somfy Automation w/ Cordless Lift*
2" & 2-1/2" Blinds					
Minimum Width (tilt only centered)	8"	n/a	n/a	n/a	n/a
Minimum Width (net)	8"	18"	10-1/2"	20"	20"
Maximum Width (one blind)	96"	78"	96"	96"	78"
Minimum Height (solid or decorative tape)	12"	n/a	n/a	12"	n/a
Minimum Height	12"	12"	12"	12"	12"
Maximum Height	108"	72"	84"	96"	72"
Maximum Width 2 on 1 Headrail	120"	n/a	120"	n/a	n/a
Maximum Continuous Valance Width (not spliced)	102"				

Blinds over max sq/ft require 2 on 1 headrail (where available) *Automation is not available with Cordless Lift & Lock

// Faux Wood Blinds – 2" WOODGRAIN

2" PREMIUM GRAINS II - 3" Modern Valance Included in Price

Note: Blinds over 50 sq. ft. require 2 on 1 Headrail. Refer to chart below for all min/max size specifications

Height to:	Width:	24"	30"	36"	42"	48"	54"	60"	66"	72"	78"	84"	90"	96"
	30"	162	176	190	209	227	264	279	297	297	313	352	373	385
36"	170	184	203	223	242	283	299	317	317	336	377	399	414	430
42"	174	193	211	233	279	295	313	334	334	354	395	420	436	455
48"	182	203	223	248	293	313	332	354	354	377	420	446	465	483
54"	188	209	231	281	305	326	346	371	371	418	438	467	487	508
61"	197	219	244	295	322	344	367	391	391	442	465	494	516	539
66"	203	227	276	305	334	356	381	408	408	459	483	514	537	561
73"	211	236	287	319	348	375	399	428	428	481	508	541	565	592
78"	217	244	297	330	360	387	414	469	469	500	526	561	588	614
84"	225	276	307	342	377	405	434	489	489	522	551	588	616	645
90"	254	285	315	352	387	418	448	506	506	541	571	608	639	670
96"	260	293	326	362	399	432	463	522	522	557	590	629	659	692
102"	268	301	336	377	416	448	506	543	543	582	614	655	690	723
108"	274	309	346	387	426	461	520	559	559	598	633	676	711	745

Available Colors:

Honey, Teak, Tobacco, Cedar, Kona

CLOTH TAPE SURCHARGE

Note: See Tape section for sizes & availability. Tapes are NOT available with Lights Out feature, Cordless or Cordless Lift & Lock™.

Width:	24"	28"	32"	36"	42"	48"	54"	60"	66"	72"	78"	84"	90"	96"	102"
Solid	\$58	\$64	\$64	\$64	\$71	\$72	\$79	\$80	\$87	\$87	\$93	\$93	\$100	\$101	\$114
Decorative	\$79	\$95	\$96	\$96	\$113	\$113	\$130	\$131	\$149	\$149	\$166	\$166	\$177	\$184	\$201

INDIVIDUAL VALANCE

Width:	24"	28"	32"	36"	42"	48"	54"	60"	66"	72"	78"	84"	90"	96"
3" Std Deco & Crescent														
3" and 4.5" modern	\$44	\$46	\$50	\$53	\$56	\$61	\$70	\$74	\$79	\$84	\$89	\$96	\$101	\$105

NO CHARGE OPTIONS

3" Modern Valance	Spacer Blocks (3/8" & 3/4")
3" Crescent Valance	Cord or Wand Tilt
Lights out Routless Feature (cordlock only)	Optional Wand & Cord Lengths
Controls (grouped or split)	2 on 1 Headrail - price each blind separately
Hold Down Brackets	Side by Side*
Tile Cut Out* (not available with cordless lift & lock)	
* Not available in the Lights Out feature	* Guaranteed within 1/4" when requested at time of order.

EXTRA CHARGE OPTIONS

Cordless Lift & Lock™ System*	Add \$86 each	Blinds Under 12" Wide	Add \$19 each
Cordless Lift System*	Add \$99 each		
Keystone Valance Option (for blinds under 102" wide)	Add \$13 each		

* Not available in the Lights Out feature

Please see Terms of Sale & Freight / Repair Charges for additional freight and shipping charge information.

Specifications	Standard	Cordless Lift	Cordless Lift & Lock™	Somfy Automation w/ Standard Lift*	Somfy Automation w/ Cordless Lift*
2" & 2-1/2" Blinds					
Minimum Width (tilt only centered)	8"	n/a	n/a	n/a	n/a
Minimum Width (net)	8"	18"	10-1/2"	20"	20"
Maximum Width (one blind)	96"	78"	96"	96"	78"
Minimum Height (solid or decorative tape)	12"	n/a	n/a	12"	n/a
Minimum Height	12"	12"	12"	12"	12"
Maximum Height	108"	72"	84"	96"	72"
Maximum Width 2 on 1 Headrail	120"	n/a	120"	n/a	n/a
Maximum Continuous Valance Width (not spliced)	102"				

Blinds over max sq/ft require 2 on 1 headrail (where available) *Automation is not available with Cordless Lift & Lock

// Faux Wood Blinds

Automation consists of a **motor, power source, and controller**. Be sure all of these elements are included when determining final price.

SOMFY RF MOTORIZED OPTIONS: EXTRA CHARGE - SPECIFY ON ORDER

Note: Charger is required to charge the shades

RF - Tilt Only 50 WireFree™ RTS	\$551
RF - Situo® 1 Remote in Pure - 1 Channel	\$164
RF - Remote Control Unit - 5 Channel	\$260
RF - Telis 16 Remote - 16 Channel	\$551
RF -T elis 1 Chronis Timer Remote	\$595
RF - Smoove® 1 Surface Mounted Wall Switch - 1 Channel (Includes Pure Frame)	\$331
RF - Smoove® 4 Surface Mounted Wall Switch - 4 Channel (Includes Pure Frame)	\$359
RF -Smoove® Frame - Silver	\$56
RF -Smoove® Frame - Black	\$56
RF - DecoFlex WireFree™ Wall Switch - 1 Channel - White	\$303
RF - DecoFlex WireFree™ Wall Switch - 5 Channel - White	\$326

SOMFY RF ACCESSORIES OPTIONS: EXTRA CHARGE - SPECIFY ON ORDER

Li-Ion Rechargeable Battery Pack	\$224
WireFree™ Li-Ion Battery Pack Charger with 80" Cable	\$74
Li-Ion 8" Charger Extension Cable	\$26
Li-Ion 94.4" Charger Extension Cable	\$53
Plug-In Transformer 12v DC, 10' Cord	\$230
Reloadable Batter Wand, empty (requires 8 AA Lithium batteries)	\$139
Dual Reloadable Batter Wand, empty w/ connecting cable (each requires 8 AA Lithium batteries)	\$276
10" Battery Wand Extension Cable	\$18
48" Battery Wand Extension Cable	\$22
96" Battery Wand Extension Cable	\$24

Notes: When ordering multiple motorized shades/remotes, please provide programming instructions. Otherwise, all shades will be programmed to one remote. Automation systems require a REMOTE CONTROL unit. The quantity of remote control units must be specified when ordering. Somfy Automation requires both a remote and power supply. Please specify when ordering.

INDIVIDUAL VALANCE ORDERING & PRICING

2" & 2 1/2" Faux Wood Color Names	Color #	3" Modern	3" Standard Decorative	3" Crescent	4 1/2" Modern
Honey	PG700	•			
Ashwood	76	•	•	•	
Alabaster	452, 952	•	•	•	•
Seaspray	75	•	•	•	
Tobacco	PG702	•			
Driftwood	77	•	•	•	
Teak	PG701	•			
Pebble	428, 928	•	•	•	
Frosted Oak	73	•	•	•	
Eggshell	404, 904	•	•	•	
Pearl	403, 903	•	•	•	•
Cedar	PG704	•			
Graystone	74	•	•	•	
Snow White	401, 901	•	•	•	•
Kona	PG705	•			
Gray Wash	78	•	•	•	
Textured Pearl	E503	•	•	•	•
Textured Snow White	E501	•	•	•	•
Cloud	451, 951	•	•	•	•
Granite	426, 926	•	•	•	

*Note: When ordering Textured Pearl or Textured Snow White all valances will be smooth.



4-1/2" Modern Valance

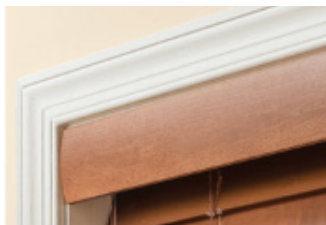
- Available in 6 colors
- Outside Mount only, mitered corners and returns
- Minimum Outside Mount return size 7/8"
- Standard Outside Mount return size 3-5/8"
- Utilizes our magnetic valance clip
- Valance projects 1/2" to 5/8" above the headrail when installed
- Keystone not available

INDIVIDUAL VALANCE

Width:	24"	28"	32"	36"	42"	48"	54"	60"	66"	72"	78"	84"	90"	96"
3" Std Deco & Crescent	\$44	\$46	\$50	\$53	\$56	\$61	\$70	\$74	\$79	\$84	\$89	\$96	\$101	\$105
3" and 4.5" modern														



3" Standard Decorative

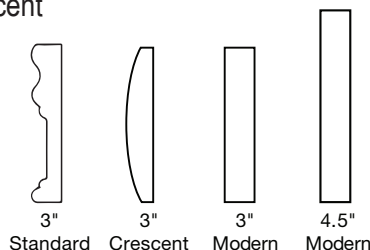


3" Crescent



3" Modern

Standard Decorative - 3" Profile
 Crescent Valance - 3" Profile (Optional)
 Modern Valance - 3" Profile (Optional)
 Modern Valance - 4-1/2" (Optional)



VALANCE AND VALANCE RETURN INFORMATION AND SPECIFICATIONS

VALANCE ORDERING

Outside Mount	1" Added to valance, measured inside returns
Inside Mount	-1/8" (no returns)
Max Un-Spliced	102"
Max Spliced	168"* (Min 2 Splices)

Notes:

- Valances are cut to measure inside miter to ensure the most accurate fit when installed over the headrail or window frame.

RETURN LENGTHS

Inside Mount Blind	3" Valance Standard, Decorative Crescent, Modern				4 1/2" Modern Valance			
	Minimum	Maximum	Minimum	Maximum	Minimum	Maximum	Minimum	Maximum
Cordlock, 2"	1/2"	6"	3/4"	6"	3"	6"	3 1/4"	6"
Cordless Lift & Lock™ 2 1/2"	1/2"	6"	3/4"	6"	3 3/8"	6"	3 5/8"	6"

- All valance profiles will be notched for better clearance. Please refer to page 14 for an example of how valance is notched.
- 4 1/2" Modern Valance cannot be installed inside the window frame. Returns must be selected for all inside mount blinds.
- All valance profiles utilize magnetic valance clips. The magnetic valance clips have a projection adjustment feature. By pulling the clips outward, they can provide an additional 1/4" projection.

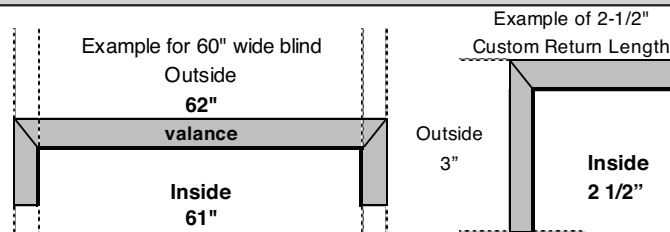
ADJUSTED RETURN LENGTHS WITH SPACER BLOCKS & EXTENSION BRACKETS

3/8" Spacer Blocks (Small)	3-3/8"
3/4" Spacer Blocks (Large)	3-3/4"
3-7/8" Extension Brackets (Short)	4-1/4"
5-7/8" Extension Brackets (Long)	6-1/4"

Notes:

- *3" Return Lengths are factory adjusted when extension brackets or (1 set of) spacer blocks are ordered.

CUSTOM VALANCE RETURNS & RETURNS - MEASURED & CUT FROM THE INSIDE:



KEYSTONE VALANCE OPTION

Keystones

Designed to cover splices in oversized valances. Use as a decorative look over any blind.

Valances under 102"

A color matched Keystone may be ordered with a valance. The valance will come assembled with the Keystone position in the center of valance.

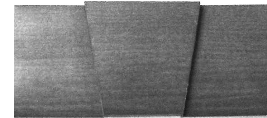
Valances over 102"

A color matched Keystone will be included at no charge. Will require assembly.

Notes:

The addition of a keystone will not affect the overall width of the valance.

The color of the keystone will match valance.



Order Configuration	How Valance Will Be Produced	
RETURN LENGTH OVERRIDE	IB	1" Wider than ordered size
	OB	1" Wider than ordered size (no change from standard)
	NET (available for Valance only orders)	With Returns- exact, inside return to return No Returns - Exact
CONTINUOUS	IB	Valance will be exact size of continuous valance measurement
	OB	Inside return to return valance will be exact ordered width
	NET (available for Valance only orders)	With Returns- exact, inside return to return No Returns - Exact
CONTINUOUS with RETURN LENGTH OVERRIDE	IB	1" Wider than ordered size
	OB	Inside return to return valance will be exact ordered width
	NET (available for Valance only orders)	With Returns- exact, inside return to return No Returns - Exact

SOLID AND DECORATIVE TAPES

TAPES



TAPE SPECIFICATIONS

- Made from a poly/cotton blend
- Resists fading or shrinking
- Decorative tapes are attached to a solid colored tape ladder. This ladder is slightly narrower than the width of the decorative ladder.
- The solid colored ladder is pre-selected. (see chart below)
- An adhesive is used to attach the decorative tape.
- The decorative tape is only applied to the ladder on the front of the blind. The back of the blind will have a solid color tape visible.

Solid Tapes

1-1/2" Solid Tape	Color Number
Alabaster	8113
Black	8899
Chocolate	8376
Dark Beige	8323
Dark Gray	8850
Light Beige	8322
Light Gray	8861
Pecan	8334
Steel	8867
Taupe	8302
White	8100

Decorative Tapes

1-1/2" Deco Tape	Color Number	Attached To
Dublin	6200	Alabaster
Hampton White	9000	White
Ivory Accent	911	Alabaster
Knit Canvas	4300	Alabaster
Knit Gray	4302	Light Gray
Knit Taupe	4301	Taupe
White Accent	910	White
1-1/4" Deco Tape	Color Number	Attached To
Stonewash Cocoa	5003	Light Beige
Stonewash Espresso	5005	Chocolate
Stonewash Gray	5002	Alabaster
Stonewash Khaki	5001	Alabaster

Solid and Decorative Tapes are not available with:

- LightsOut Routeless Feature
- Cordless Lift
- Cordless Lift & Lock™

PRODUCT SPECIFICATIONS

FEATURES	2"	2-1/2"
# of Colors	20	7
Headrail Size	1-1/2" x 2-1/4"	1-1/2" x 2-1/4"
Headrail Gauge	.024	.024
Bracket Style	Box	Box
Bottomrail - Standard/Cordless Lift	Trapezoid	Trapezoid
Bottomrail - Cordless Lift & Lock	Vinyl	Vinyl
Ladder Space	44 mm	54 mm
Wand Tilt	Yes	Yes
Decorative Valance	Yes - 3"	Yes - 3"
Crescent Valance (Optional)	Yes - 3"	Yes - 3"
Modern Valance (Optional)	Yes - 3"	Yes - 3"
Modern Valance (Optional)	Yes - 4-1/2"	Yes - 4-1/2"
Valance Return Lengths (standard for outside mounts)	3"	3-3/8"
Adjustable Valance Attachment System	Yes	Yes
Decorative Tassel	Yes	Yes
Headrail End Stiffener	Yes	Yes
Break-Away Stop Ball	Yes	Yes
Warranty (Tilt motor systems are warranted for 5 years)	Limited Lifetime	Limited Lifetime
Flame Resistant – NFPA #701 (2" & 2-1/2" Whites/ Neutrals & 2" Premium Grains I)	Yes	Yes

OPTIONS AND UPGRADES	2"	2-1/2"
Cordless Lift	Yes	Yes
- not available with tapes & LightsOut Routeless feature		
Cordless Lift & Lock™	Yes	Yes
- not available with tapes & LightsOut Routeless feature		
Somfy Automation System 1	Yes	Yes
- not available with Cordless Lift & Lock™		
LightsOut Routeless Slats 1	Yes	Yes
- not available with tapes, Cordless lift or Cordless Lift & Lock™		
2 On 1 Headrail 2	Yes	Yes
- 2-on-1 headrail not available with Cordless lift		
Tapes (not available with LightsOut feature)	Yes	Yes
- not available with Cordless lift or Cordless Lift & Lock™		
Crescent Valance Option	Yes	Yes
Modern Valance Option	Yes	Yes
Keystone Valance Option	Yes	Yes

CONTROL/MOUNTING OPTIONS	2"	2-1/2"
Cord Tilt (single blind)	Yes	Yes
Wand/Cord – Custom Lengths (single blind)	Yes	Yes (Cord Only)
Control Positions (single blind)	LR, RL or Grouped	LR, RL or Grouped
Tilt Control Position – Cordless	Left Tilt Only	Left Tilt Only
Tilt Control Position – (single blind)	L or R (Wand only) Under 12" net - center tilt only	L or R (Wand only) Under 12" net - center tilt only
Tilt Control Position – Cordless Lift & Lock™ (single blind)	L or R Under 12-1/2" net - center tilt only	L or R Under 12-1/2" net - center tilt only
Lift Control Position – Automation (Motor will be on opposite side)	L or R	L or R
Tile Cut-out(s)	Yes	Yes
- not available with cordless Lift & Lock™		
Spacer Blocks (3/8" and 3/4" Depths)	Yes	3/8" Standard
Extension Brackets (Short & Long)	Yes	Yes
Hold-down Brackets	Yes	Yes
- not available with 2-1/2" cordless Lift & Lock		

2 on 1 Cordlock with Wand Tilt	Width (NET)	LEFT BLIND		RIGHT BLIND		
		WAND TILT	LIFT CORD	WAND TILT	LIFT CORD	
	8" to 11-7/8"	C (only)	n/a	C (only)	n/a	
	12" to 18"	R (only)	L (only)	L (only)	R (only)	
	18-1/8" or more	L or R	L (only)	L or R	R (only)	
2 on 1 Cordlock with Cord Tilt	Width (NET)	LEFT BLIND		RIGHT BLIND		
		CORD TILT	LIFT CORD	CORD TILT	LIFT CORD	
		8" to 11-7/8"	N/A	N/A	N/A	N/A
		12" to 18"	N/A	N/A	N/A	N/A
	18-1/8" or more	L (only)	L (only)	R (only)	R (only)	
2 on 1 Lift & Lock with Wand Tilt	Width (NET)	LEFT BLIND	Right Blind			
		WAND TILT	WAND TILT			
		10-1/2" to 12-3/8"	C (only)	C (only)		
	12-1/2" or more	L or R	L or R			
2 on 1 Lift & Lock with Cord Tilt	Width (NET)	LEFT BLIND	Right Blind			
		CORD TILT	CORD TILT			
		10-1/2" to 12-3/8"	C (only)	C (only)		
	12-1/2" or more	L (only)	R (only)			

FOOTNOTES (FEATURES & SPECIFICATIONS)
1 The LightsOut configuration may cause slight "puckering" of the lift cords on the front of the blind when the slats are tilted backwards (reverse tilt) due to the use of interlacing cords on the front (the back uses looped ladders). A gentle tug down on the lift cord tassel will eliminate any puckering.
The slats on LightsOut routeless blinds feature notches in the slat instead of route holes. Regardless of blind size, there will be notches in the front and rear of the slat on the far right and far left ladders only, approximately 6" in from the end of the slat.
2 There will be a 1/2" maximum light gap between multiple blinds on 1 headrail. 2 on 1 headrail not available with the Automation upgrades.
Wood tone blinds will include Antique Brass tape clamps and White/Neutral tone blinds will include White tape clamps on the bottomrail.

SIZE SPECIFICATIONS

STANDARD RECTANGULAR	2"	2-1/2"
Minimum Width (Net)	8" 12" with Tapes	
Maximum Width (One blind)	96"	
Minimum Height	12"	
Maximum Height	108"	
Max. AREA (SQ/FT) (Blinds over 50 SQ/FT require 2 on 1 headrail)	50 sq/ft	
Maximum Width 2 on 1 Headrail	120"	
Maximum Continuous Valance Width (not spliced)	102"	

CORDLESS LIFT	2"	2-1/2"
Minimum Width (Net)	18"	
Maximum Width (One blind)	78"	
Minimum Height	12"	
Maximum Height	72"	
Maximum AREA (SQ/FT)	40 sq/ft	36 sq/ft
Maximum Width 2 on 1 Headrail	N/A	
Maximum Continuous Valance Width (not spliced)	120"	

CORDLESS LIFT & LOCK™	2"	2-1/2"
Minimum Width (Net)	10-1/2"	
Maximum Width (One blind)	96"	
Minimum Height	12"	
Maximum Height	84"	
Maximum AREA (SQ/FT)	40 sq/ft	31 sq/ft
Maximum Width 2 on 1 Headrail	120"	
Maximum Continuous Valance Width (not spliced)	102"	

Somfy Automation	2" w/ Std Lift	2" w/ Cordless Lift	2-1/2" w / Std Lift	2-1/2" with Cordless Lift
Minimum Width (Net)	20" 22" with Tapes	20" Tapes N/A	20" 22" with Tapes	20" Tapes N/A
Maximum Width (One blind)	96"	78"	96"	78"
Maximum Height	96"	72"	96"	72"
Maximum AREA (SQ/FT)	50 sq/ft	40 sq/ft	50 sq/ft	36 sq/ft
Maximum Continuous Valance Width (not spliced)	102"	102"	102"	102"

FINISHED DIMENSIONS

Adjustments are taken from ordered dimensions and may vary slightly.

Inside (IB) Mount	
Headrail width ¹	- 3/4"
Blind width	- 1/2"
Blind height	ordered height
Valance	- 1/8"
Outside (OB) Mount	
Headrail width ¹	- 1/4"
Blind width	ordered width
Blind height	ordered height
Valance	+ 1"
2 on 1 Headrail	
Gap between panels	- 1/2"

MOUNTING REQUIREMENTS

Use a metal tape measure for all measurements.

Inside (IB) Mount	
Minimum mounting depth:	1-1/8"
Minimum mounting depth, flush mount - 2" Slat :	3-1/2"
Minimum mounting depth, flush mount - 2-1/2" Slat :	3-3/4"
Outside (OB) Mount	
Minimum flat vertical surface:	1-3/4"

FOOTNOTE

1 The headrail width has a 1/4" deduction on outside mounts and 3/4" deduction on inside mounts to accommodate the installation brackets.

CONTROL CHARTS – STANDARD CORD LIFT

TILT CORD (OPTIONAL)

- Cords are **color-coordinated** with slats
- Standard tilt cord lengths are 40% of the blind height as required by child safety standards. Customized lengths are available upon request.
 - For 2" blinds, minimum cord length is 10". For blinds under 15" in height, a cord length override to at least 10" must be requested.
 - For 2-1/2" blinds, minimum cord length is 10". For blinds under 24-3/4" in height, a cord length override to at least 10" must be requested.
- For **Somfy Automation**, the tilt function is controlled by remote unit

CONTROL POSITIONS:

- Tilt Cord center and no Lift Cord*
- Tilt Cord **left** / Lift Cord **right** (standard)
- Lift Cord **left** / Tilt Cord **right**
- Tilt & Lift Cords *grouped left*
- Tilt & Lift Cords *grouped right*

Min. Width (NET)	
	Under 12"
	12"
	12"
	18-1/8"
	18-1/8"

* Available on 2" blinds only

Lift Cord Control – Standard lift cord length is 40% of the blind height as required by child safety standards. Customized lengths are available upon request. Minimum cord length is 10". For blinds under 15" in height, a cord length override to at least 10" must be requested.

LADDER/TAPE PLACEMENT CHARTS

The chart shows the number of ladders and routes based on the NET width of the blind.

Blind Width	2" & 2-1/2" Faux	
	# of Ladders	# of Routes
8" to 20" **	2	2
20-1/8" to 32"	3	2
32-1/8" to 44"	4	4
44-1/8" to 56"	5	4
56-1/8" to 68"	6	4
68-1/8" to 80"	7	4
80-1/8" to 96"	8	4

**Under 12" NET for 2" slats only

**Routes are positioned approximately 2" from the end of the slat for blinds less than 12 1/8" wide, and 4" from the end of the slat for all others. Exceptions are standard and LightsOut blinds with grouped controls will be approximately 4 1/2" from end of slat, and 4 3/4" for blinds with cloth tapes and grouped controls, and 6-5/8" for blinds with Somfy Motorization

STACK-UP-CHART (APPROXIMATE)

The charts below show the stacking height of the slats when the blind is fully raised. **Add in HR+BR for total.**

- Headrail+Bottomrail = 2-1/2"

2" Faux	
Blind Height	Stack Height
48"	5"
72"	7-1/2"
84"	9-1/4"
96"	10-7/8"

2-1/2" Faux	
Blind Height	Stack Height
48"	4"
72"	6-1/4"
84"	7-1/2"
96"	9"

PLUS + 2-1/2"

PLUS + 2-1/2"

TILT WAND (STANDARD)

- Tilt wands are **color-coordinated** with slats
- Chart shows standard lengths.
- For **Somfy Automation**, tilt function is controlled by remote unit
- Tilt Length Override – specify length when ordering

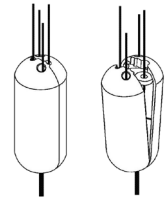
Color wands up to 48" long. Clear in 60", 72", 84".
Wand length optional. Specify above optional lengths when ordering.

2" & 2-1/2" Faux	
Wand Length	Blind Height
12"	12" to 24"
20"	24 1/8" to 36"
24"	36 1/8" to 48"
36"	48 1/8" to 72"
48"	72 1/8" to 96"

BREAK-AWAY STOP BALL

- Stop balls are standard for ALL lift cords.

The stop ball separates under pressure. It easily snaps together again.

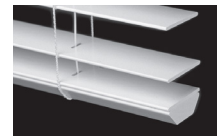


BOTTOMRAIL (STANDARD)

- 2" **Trapezoid** bottomrails are standard on faux wood blinds with **standard lift cords**

The "trapezoid" bottomrail provides a contoured, modern look along with improved blind operation (slat tilting & rotating).

Trapezoid Bottomrail



SQUARE FOOTAGE SPECIFICATIONS

2" FAUX

WIDTH																																									
TO:	24	28	32	36	42	48	54	60	66	72	78	84	90	96																											
HEIGHT TO:																5	6	7	8	9	10	11	13	14	15	16	18	19	20												
30																5	6	7	8	9	10	11	13	14	15	16	18	19	20												
36																6	7	8	9	11	12	14	15	17	18	20	21	23	24												
42																7	8	9	11	12	14	16	18	19	21	23	25	26	28												
48																8	9	11	12	14	16	18	20	22	24	26	28	30	32												
54																9	11	12	14	16	18	20	23	25	27	29	32	34	36												
61																10	12	14	15	18	20	23	25	28	31	33	36	38	41												
66																11	13	15	17	19	22	25	28	30	33	36	39	41	44												
73																12	14	16	18	21	24	27	30	33	37	40	43	46	49												
78																13	15	17	20	23	26	29	33	36	39	42	46	49	N/A												
84																14	16	19	21	25	28	32	35	39	42	46	49	N/A	N/A												
90																15	18	20	23	26	30	34	38	41	45	49	N/A	N/A	N/A												
96																16	19	21	24	28	32	36	40	44	48	N/A	N/A	N/A	N/A												

Max Square Footage 50

2-1/2" FAUX

WIDTH																																									
TO:	24	28	32	36	42	48	54	60	66	72	78	84	90	96																											
HEIGHT TO:																5	6	7	8	9	10	11	13	14	15	16	18	19	20												
30																5	6	7	8	9	10	11	13	14	15	16	18	19	20												
36																6	7	8	9	11	12	14	15	17	18	20	21	23	24												
42																7	8	9	11	12	14	16	18	19	21	23	25	26	28												
48																8	9	11	12	14	16	18	20	22	24	26	28	30	32												
54																9	11	12	14	16	18	20	23	25	27	29	32	34	36												
61																10	12	14	15	18	20	23	25	28	31	33	36	38	41												
66																11	13	15	17	19	22	25	28	30	33	36	39	41	44												
73																12	14	16	18	21	24	27	30	33	37	40	43	46	49												
78																13	15	17	20	23	26	29	33	36	39	42	46	49	N/A												
84																14	16	19	21	25	28	32	35	39	42	46	49	N/A	N/A												
90																15	18	20	23	26	30	34	38	41	45	49	N/A	N/A	N/A												
96																16	19	21	24	28	32	36	40	44	48	N/A	N/A	N/A	N/A												

Max Square Footage 50

CONTROL CHARTS – CORDLESS

TILT CORD (OPTIONAL)

- Tilt cords are **color coordinated** with slats
- Standard tilt cord lengths are 40% of the blind height as required by child safety standards. Customized lengths are available upon request.
 - For 2" blinds, minimum cord length is 10". For blinds under 15" in height, a cord length override to at least 10" must be requested.
 - For 2-1/2" blinds, minimum cord length is 10". For blinds under 24-3/4" in height, a cord length override to at least 10" must be requested.
- LIFT** function is controlled from the bottom rail

TILT CONTROL POSITIONS - LEFT ONLY

Tilt Wand (Standard), Tilt Cords (Optional) or Somfy Automation (Optional)

Min. Width (NET)
18"
20" with Somfy Automation

TILT WAND (STANDARD)

- Tilt wands are **color-coordinated** with slats
- Chart shows standard lengths.
- Somfy Automation, tilt function is controlled by remote unit**
- Tilt Length Override – specify length when ordering

Color wands up to 48" long. Clear in 60", 72", 84".
Wand length optional. Specify above optional lengths when ordering.

2" & 2-1/2" Faux	
Wand Length	Blind Height
12"	12" to 24"
20"	24 1/8" to 36"
24"	36 1/8" to 48"
36"	48 1/8" to 72"

LADDER/TAPE PLACEMENT CHARTS

The chart shows the number of ladders and routes based on the NET width of the blind.

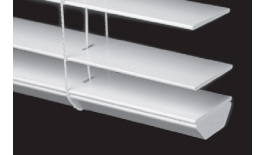
2" & 2-1/2" Faux		
# of Routes	# of Ladders	# of Routes
18" to 24"	2	2
24-1/8" to 36"	3	2
36-1/8" to 48"	4	4
48-1/8" to 60"	5	4
60-1/8" to 72"	6	4
72-1/8" to 78"	7	4

**Routes are positioned approximately 6" from the end of the slat for all blinds and 6-5/8" for blinds with Bliss or Somfy Automation

BOTTOMRAIL - CORDLESS LIFT

- 2" Trapezoid** bottomrails are standard on faux wood blinds with **cordless lift**

The "trapezoid" bottomrail provides a contoured, modern look along with improved blind operation (slat tilting & rotating).



STACK-UP CHART (APPROXIMATE)

The charts below show the stacking height of the slats when the blind is fully raised. **Add in HR+BR for total.**

2" Faux	
Blind Height	Stack Height
48"	5"
72"	7-1/2"

PLUS + 2-1/2"

2-1/2" Faux	
Blind Height	Stack Height
48"	4"
72"	6-1/4"

PLUS + 2-1/2"

SQUARE FOOTAGE SPECIFICATIONS

2" FAUX

WIDTH TO:	24	28	32	36	42	48	54	60	66	72	78
HEIGHT TO:											
30	5	6	7	8	9	10	11	13	14	15	16
36	6	7	8	9	11	12	14	15	17	18	20
42	7	8	9	11	12	14	16	18	19	21	23
48	8	9	11	12	14	16	18	20	22	24	26
54	9	11	12	14	16	18	20	23	25	27	29
61	10	12	14	15	18	20	23	25	28	31	33
66	11	13	15	17	19	22	25	28	30	33	36
72	12	14	16	18	21	24	27	30	33	37	40

Max Square Footage 40

2-1/2" FAUX

WIDTH TO:	24	28	32	36	42	48	54	60	66	72	78
HEIGHT TO:											
30	5	6	7	8	9	10	11	13	14	15	16
36	6	7	8	9	11	12	14	15	17	18	20
42	7	8	9	11	12	14	16	18	19	21	23
48	8	9	11	12	14	16	18	20	22	24	26
54	9	11	12	14	16	18	20	23	25	27	29
61	10	12	14	15	18	20	23	25	28	31	33
66	11	13	15	17	19	22	25	28	30	33	36
72	12	14	16	18	21	24	27	30	33	N/A	N/A

Max Square Footage 36

CONTROL CHARTS – SOMFY AUTOMATION

CONTROLS

- Lift cords are **color coordinated** with slats
- Standard lift cord lengths are 40% of the blind height as required by child safety standards. Customized lengths are available upon request.
 - For **2" blinds**, minimum cord length is 10". For blinds under 15" in height, a cord length override to at least 10" must be requested.
 - For **2-1/2" blinds**, minimum cord length is 10". For blinds under 24-3/4" in height, a cord length override to at least 10" must be requested.
- For motorized blinds, tilt is controlled by remote unit

CONTROL POSITIONS:

Lift Cord **right** (standard) or **left**

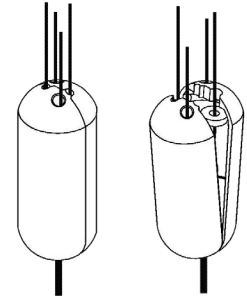
Min. Width
20"
22" with Tapes

Motor position will be on the opposite side of Lift Cord

BREAK-AWAY STOP BALL

- Stop balls are standard for ALL lift cords.

The stop ball separates under pressure. It easily snaps together again.



LADDER/TAPE PLACEMENT CHARTS

The chart shows the number of ladders and routes based on the NET width of the blind.

2" & 2-1/2" FAUX		
Blind Width	# of Ladders	# of Routes
20" to 24"	2	2
24-1/8" to 36"	3	2
36-1/8" to 48"	4	4
48-1/8" to 60"	5	4
60-1/8" to 72"	6	4
72-1/8" to 84"	7	4
84-1/8" to 96"	8	4

**Routes approximately 6-5/8" from the end of the slat.

STACK-UP CHART (Approximate)

The charts below show the stacking height of the slats when the blind is fully raised. **Add in HR+BR for total.**

- Headrail+Bottomrail = 2-1/2"

2" Faux	
Blind Height	Stack Height
48"	5"
72"	7-1/2"
84"	9-1/4"
96"	10-7/8"

2 1/2" Faux	
Blind Height	Stack Height
48"	4"
72"	6-1/4"
84"	7-1/2"
96"	9"

CONTROL CHARTS – CORDLESS LIFT & LOCK SYSTEM

TILT CORD (OPTIONAL)

- Cords are **color-coordinated** with slats
- Standard tilt cord lengths are 40% of the blind height as required by child safety standards. Customized lengths are available upon request.
 - For 2" blinds, minimum cord length is 10". For blinds under 15" in height, a cord length override to at least 10" must be requested.
 - For 2-1/2" blinds, minimum cord length is 10". For blinds under 24-3/4" in height, a cord length override to at least 10" must be requested.
- For cordless Lift & Lock the lift function is controlled by the bottomrail

CONTROL POSITIONS:

Tilt Cord **center ONLY**

Tilt **Left or Right ONLY**

Min. Width (NET)
10-1/2" to 12-3/8"
12-1/2" and more

TILT WAND (STANDARD)

- Tilt wands are **color-coordinated** with slats
- Chart shows standard lengths.
- Tilt Length Override (Optional) – specify length when ordering

Color wands up to 48" long. Clear in 60", 72", 84".
Wand length optional. Specify above optional lengths when ordering.

2" & 2-1/2" Faux	
Wand Length	Blind Height
12"	12" to 24"
20"	24 1/8" to 36"
24"	36 1/8" to 48"
36"	48 1/8" to 72"
48"	72 1/8" to 96"

LADDER/TAPE PLACEMENT CHARTS

The chart shows the number of ladders and routes based on the NET width of the blind.

2" & 2-1/2" Faux		
Blind Width	# of Ladders	# of routes
10-1/2" to 12-1/2"	2	2
12-5/8" to 18"	2	2
18-1/8" to 21-1/2"	2	2
21-5/8" to 33-1/2"	3	2
33-5/8" to 45-1/2"	4	2
45-5/8" to 57-1/2"	5	4
57-5/8" to 69-1/2"	6	4
69-5/8" to 81-1/2"	7	4
81-5/8" to 96"	8	4

**Routes are positioned approximately 2 1/2" from the end of the slat for blinds less than 12 1/2" wide, 3" from the end of the slat for blinds less than 18 1/8" wide, and 4 3/4" from the end of the slat for all others.

BOTTOMRAIL – CORDLESS LIFT & LOCK™

- A **2" deep by 1" tall faux bottomrail** is standard
- Bottom rail colors are pre-selected. Color matched to slat color. Hardware override is not available
- Color coordinated end caps



STACK-UP CHART (APPROXIMATE)

The charts below show the stacking height of the slats when the blind is fully raised. **Add in HR+BR for total.**

- Headrail+Bottomrail = 2-1/2"

2" Faux	
Blind Height	Stack Height
48"	5"
72"	7-1/2"
84"	9-1/4"

2-1/2" Faux	
Blind Height	Stack Height
48"	4"
72"	6-1/4"
84"	7-1/2"

PLUS + 2-1/2"

PLUS + 2-1/2"

SQUARE FOOTAGE SPECIFICATIONS

2" FAUX

WIDTH TO:	24	28	32	36	42	48	54	60	66	72	78	84	90	96
HEIGHT TO:														
30	5	6	7	8	9	10	11	13	14	15	16	18	19	20
36	6	7	8	9	11	12	14	15	17	18	20	21	23	24
42	7	8	9	11	12	14	16	18	19	21	23	25	26	28
48	8	9	11	12	14	16	18	20	22	24	26	28	30	32
54	9	11	12	14	16	18	20	23	25	27	29	32	34	36
61	10	12	14	15	18	20	23	25	28	31	33	36	38	N/A
66	11	13	15	17	19	22	25	28	30	33	36	39	N/A	N/A
73	12	14	16	18	21	24	27	30	33	37	40	N/A	N/A	N/A
78	13	15	17	20	23	26	29	33	36	39	N/A	N/A	N/A	N/A
84	14	16	19	21	25	28	32	35	39	N/A	N/A	N/A	N/A	N/A

Max Square Footage 40

2-1/2" FAUX

WIDTH TO:	24	28	32	36	42	48	54	60	66	72	78	84	90	96
HEIGHT TO:														
30	5	6	7	8	9	10	11	13	14	15	16	18	19	20
36	6	7	8	9	11	12	14	15	17	18	20	21	23	24
42	7	8	9	11	12	14	16	18	19	21	23	25	26	28
48	8	9	11	12	14	16	18	20	22	24	26	28	30	N/A
54	9	11	12	14	16	18	20	23	25	27	29	N/A	N/A	N/A
61	10	12	14	15	18	20	23	25	28	N/A	N/A	N/A	N/A	N/A
66	11	13	15	17	19	22	25	28	30	N/A	N/A	N/A	N/A	N/A
73	12	14	16	18	21	24	27	30	N/A	N/A	N/A	N/A	N/A	N/A
78	13	15	17	20	23	26	29	N/A	N/A	N/A	N/A	N/A	N/A	N/A
84	14	16	19	21	25	28	N/A	N/A	N/A	N/A	N/A	N/A	N/A	N/A

Max Square Footage 31

Sonoran
FAUX WOOD
BLIND COLLECTION

www.bddinc.com

Tucson	520.327.0123
Phoenix	602.243.9798
Salt Lake City	801.467.5065
Albuquerque	505.880.0883
Las Vegas	702.369.5333